

Enzyme operations, cloning simulation, graphic maps -- Version 9 for Windows

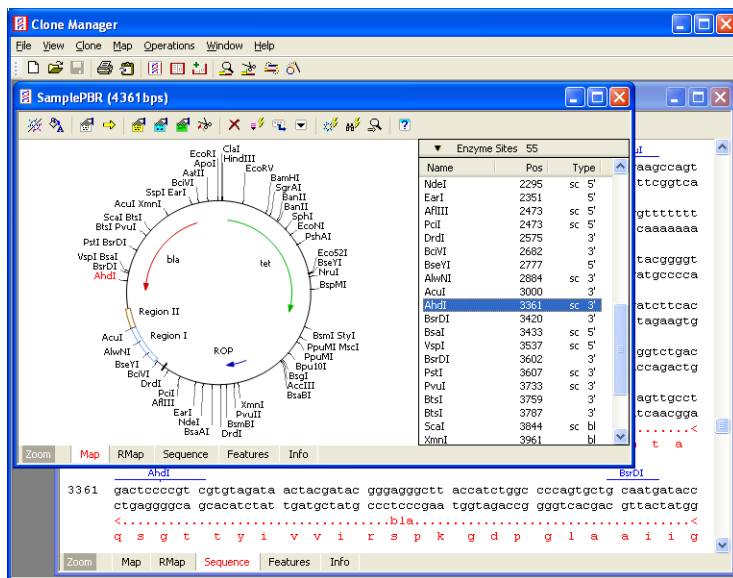
Clone Manager Basic acts as an expert system to help with cloning simulation, enzyme operations and graphic map drawing. You can also use Clone Manager as a quick and easy way to view or edit sequence files, find open reading frames, translate genes, or find genes or text in files.

If you also need primer design or sequence alignment features, you may want to look into the Clone Manager Professional suite instead. For more information about the suite, please call us or visit our web site, www.scied.com.

Work with Enzymes

- Find enzyme sites, view enzyme information
- Do restriction enzyme analysis
- New, easier-to-use enzyme list display **NEW**

Clone Manager scans the sequence and identifies enzyme recognition sites, drawing an accurate on-screen working map. Click tabs at the bottom of the molecule viewer window to see the map, restriction map data, sequence, features, or molecule information. Zoom to transiently view just a portion of a larger molecule.



Scrolling map sites list now shows enzyme sites or features. Enzyme site information includes name, position, type of ends produced and if a single cutter (sc).

A fast and powerful restriction enzyme analysis module has five display styles, including a list of No-Cutters. Filter to see only the results you need. View enzyme properties, suppliers, isoschizomers, or compatible ends information. Update master enzyme lists monthly using REBASE files.

A wizard will help you to construct lists of the enzymes you use most often in your lab. Transient enzyme lists handle quick selection of enzymes for immediate needs.

Simulate Cloning

- Cut, ligate DNA, modify molecule ends
- Use Ligate window or Plan Cloning Wizard
- New Gateway® and Topo Cloning Wizards **NEW**

Clone Manager can cut DNA at enzyme cut sites or at user-specified basepair positions. Molecule features and enzyme sites are automatically recalculated after a cut operation. The program can ligate DNA, checking for compatible ends. You can modify molecule ends, if needed for ligation, and select the cloning orientation.

For fast simulated cloning, you can cut, ligate, and modify ends -- all from the same display window showing sticky ends and molecule icon maps. The Plan Cloning Wizard lets you describe your cloning objectives, review the list of possible solutions, and construct the recombinant.

The new Gateway or Topoisomerase Cloning Wizards help you to simulate cloning using Gateway® Recombination Cloning or Topo® Cloning techniques. The wizards will help you select the appropriate components, show you the proposed result, and create the resulting recombinant molecule.


Draw Graphic Maps

- Prepare high-resolution graphic maps
- Print, copy to clipboard, export to file
- Enhanced Views of graphic map

Prepare high-resolution circular or linear graphic maps. Control styles and colors for feature types and enzyme sites; control map size and position. For your lab notebook, select to print the map with associated text (description and notes; map features and enzyme sites).

For a publication or presentation, use an Enhanced View of the graphic map to customize a special molecule map. Set individual feature styles, colors, patterns, positions. Drag feature names to reposition, if needed. Remove enzyme sites or features from a map without modifying the original molecule data. Save enhanced views in the molecule file (maximum 6 views/file). Print, copy, export in vector or raster (Tif, Png, Gif, bitmap) formats.

Other Features

- Integrated sequence editor and file handler
- Extensive sequence formatting options
- Built-in DataBook database - new interface 

Clone Manager reads files in GenBank, EMBL, FASTA or Clone Manager file formats, or sequence data in simple ASCII text files. You can also import (paste) files from the clipboard or retrieve files from Entrez (NCBI).

The sequence editor can display full or partial sequences in a variety of formats. Display any combination of sequence, enzyme sites, sequence labels, translation, annotations and memorize your favorite style settings.

You can also edit sequences, join sequences, rotate circular molecules, invert or translate sequences, find Open Reading Frames, or find regions in the sequence that match a search string.

DataBook is a simple, built-in database to store and organize information about your molecules. Automatic data entry of most information you'll need makes it really easy to use. A new feature lets you create databooks from existing molecule files in one easy batch operation.

Analysis Functions

- Open Reading Frame analysis
- DNA Repeats, Dyad Symmetries analyses
- Hydrophilicity, Protein structure analyses
- Mutagenesis Profile module

Open Reading Frame analysis maps start and stop codons in 6 reading frames and calculates Fickett's TESTCODE scores to help identify coding regions.

Analyze direct or inverted repeats and dyad symmetries to identify regions that might be associated with biologically active sites such as control regions, transcription terminator regions, or RNA processing sites.

Analyze protein or translated DNA for hydrophilicity and surface exposure. Analyze protein structure for alpha-helix, beta-sheet (extended), beta-turn, random coil states.

Mutagenesis Profile shows a portion of molecule sequence with one frame of translation and enzyme sites. View possible silent changes, find 'almost' enzyme sites, or view base changes required to change from one amino acid to another. Introduce a mutation and create a new molecule.

System Requirements: Recommended configuration: Windows 7 or Windows Vista. Minimum configuration: Windows XP. 10 Mb hard disk space required for program installation. Concurrent user license installation supports most standard Windows network systems or TCP/IP networks. Upgrades from version 8 available. Call or write for more information

License Type	Price	Catalog No
Clone Manager Basic 9, Individual User License	\$575	IL 3901
Clone Manager Basic 9, 4-Seat WorkGroup License	\$900	WG 3908-4
Clone Manager Basic 9, 8-Seat WorkGroup License	\$1450	WG 3908-8
Clone Manager Basic 9, Concurrent 5-User License	\$1700	CL 3905-5

License Information

Individual User License

For use by one individual or installation on a single computer. Receive program CD, 1 Getting Started manual and 1 Quick Reference guide.

Small WorkGroup License

Install on the licensed number of individual computers (seats) for use by members of the workgroup. Receive program CD, 1 or 2 Getting Started manuals, 4 or 8 Quick Reference guides.

Concurrent 5-User License

Install on a single server for a multi-user computer network. Permits 5 users to concurrently use the program. Receive program CD, 2 Getting Started manuals, 10 Quick Reference guides. (Contact us for larger license information.)

For Research Use Only. Not for use in diagnostic procedures.

Ordering Information

Program disks and manuals will be shipped within 5 days of receipt of order. For standard shipping the following shipping and handling charges will be added to your total order. Expedited shipping can be arranged.

US (continental)- Fed Ex economy service	\$15
International - Individual User licenses	\$25
International - Multi-user licenses	\$50
Light Pack - call for details	

Payment by VISA, MasterCard, agency / university purchase order (terms net 30 days) or check. Checks must be in US funds and drawn on any US bank. All duties and taxes (including GST or VAT) are the responsibility of the purchaser. Scientific & Educational Software is classified as a small business. Federal tax number 52-1516160.

December 2010. Prices subject to change without notice.